

# EXPLORE THE SOUTHERN LIMESTONE COAST



*Explore*

A GUIDE FOR FAMILIES &  
VISITORS TO EXPERIENCE THE  
SOUTHERN LIMESTONE COAST



MOUNT GAMBIER  
CHAMBER OF  
COMMERCE





# SELF DRIVE TOURS

## SOUTHERN LIMESTONE COAST

### **ROUTE 1: Active Adventure**

Track the Southern Limestone Coast's volcanic marvels down to the rugged coast, concluding with Yahl's premier boutique producers. Features highlights like the Blue Lake, Piccaninnie Ponds, and the dramatic depths of Hell's Hole.

### **ROUTE 2: Scenic Tour**

Journey through a landscape defined by fiery lava and water, where geological wonders meet local flavors. Discover the ancient history of the craters, hike the Mount Schank scenic rim, and visit the iconic Little Blue Lake.

### **ROUTE 3: Experience Port MacDonnell**

Discover South Australia's southernmost tip on a seaside journey blending wild coastal scenery rich with maritime heritage. Explore rugged cliffs, historic landmarks, and the town's welcoming local eateries.

**Food + Drink Directory**

**Bookable Tours Directory**

# ACTIVE ADVENTURE



This loop track's the volcanic natural wonders of the Limestone Coast down to the rugged coastline, topped off with Yahl's premier boutique producers..

1. **Blue Lake, Mount Gambier**
2. **The Apple Farm, OB Flat**
3. **Piccaninnie Ponds, Wye**
4. **Brown Beach, Eight Mile Creek**
5. **Hell's Hole, Caveton**
6. **Caroline Hills Winery, Yahl**
7. **Little Rippa Brewing Company, Yahl**
8. **Return to Mount Gambier**



# ACTIVE ADVENTURE



**Blue Lake, Mount Gambier:** Experience Mount Gambier's iconic dormant volcano, famous for shifting from a somber winter grey to a brilliant summer cobalt; a 3.6 km rim walk provides the ultimate vantage point to witness this seasonal phenomenon.

**The Apple Farm, OB Flat:** A hidden treasure nestled within a lush grove of 1,000 apple trees. While celebrated as a premier rustic event space, it regularly welcomes guests for casual gatherings fueled by wood-fired pizzas, local coffee, and their famous signature mulled wine. *(Bookings Essential)*

**Piccaninnie Ponds, Wye:** Explore some of the world's clearest water. This renowned snorkeling and diving site features underwater limestone cathedrals, while the surrounding wetland trails are perfect for birdwatching. *(Currently closed to snorkelling - but the conservation park remains open for walking, viewing and boardwalk access.)*

**Brown Beach, Eight Mile Creek:** A wild, untouched stretch of the Southern Ocean. This local favorite is ideal for a rugged coastal walk, beachcombing, or simply breathing in the fresh salt air away from the crowds.

**Hell's Hole, Caveton:** Peer into a prehistoric lost world. This massive, circular sinkhole features a viewing platform over a deep cobalt-blue pool surrounded by steep limestone walls and hanging greenery.

**Caroline Hills Winery, Yahl:** Over 18s can enjoy a sophisticated tasting at this boutique vineyard. Set in lush gardens and an art gallery, it's the premier spot for cool-climate Pinot Noir and Sparkling varieties. *(Bookings Essential)*

**Little Rippa Brewing Company, Yahl:** Over 18s can round out the tour with a relaxed craft beer in a converted farm shed. Pair their locally brewed ales with hearty food before the short 10-minute drive back to town. *(Bookings Essential)*



**ACTIVE ADVENTURE  
GOOGLE MAP**



# SCENIC TOUR

- 1. The Riddoch, Mount Gambier**
- 2. The Blue Lake, Mount Gambier**
- 3. Valley Lake, Mount Gambier**
- 4. ScRoll Queen + Good Intentions Wine Co, Moorak**
- 5. Mount Schank Volcano, Mount Schank**
- 6. Little Blue Lake, Mount Schank**
- 7. Bellum Hotel, Mount Schank**
- 8. Return to Mount Gambier**

This loop explores Australia's volcanic landscape, blending geological wonders with local flavor. Discover ancient history at the craters, hike a dormant volcano rim, and enjoy a cold plunge swim in the Little Blue Lake. With sweet treats, volcanic wines, and a classic pub lunch, it's the perfect journey through the region's dramatic natural heritage.

# SCENIC TOUR

**The Riddoch Arts & Cultural Centre:** Watch the Craitbul film to ground yourself in the region's history through a beautiful blend of the geological science of volcanic eruptions and the deep dreaming stories of the Boandik people.

CRAITBUL SCREENING TIMES: 11:00am & 2:00pm on weekdays, 11:00am on public holidays and weekends. Free event.

**Plan your day and determine your departure time - If planning an early departure consider making this your final stop. Saving it for last may make it easier to balance your tour and meal breaks.**

**The Blue Lake:** Witness Mount Gambier's iconic crater lake as it shifts from winter grey to a vibrant, electric cobalt blue; this stunning summer transformation is a natural phenomenon triggered by the warming of its crystal-clear volcanic waters.

**Valley Lake:** Head into the neighboring crater to explore the lush Wildlife Park and boardwalks; it's a perfect spot to see the sheer height of the volcanic walls from the basin floor looking up.

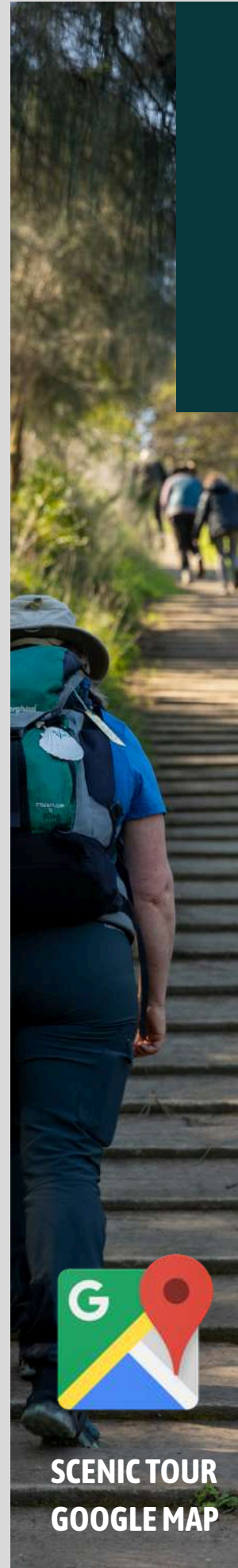
**ScRoll Queen + Good Intentions Wine Co:** Stop along the highway in Moorak to satisfy your cravings; grab a legendary, gooey cinnamon scroll for morning or afternoon tea and over 18s can source a bottle of volcanic wine from the neighbouring cellar door for later.

**Mount Schank Volcano:** Hike to the rim of Australia's youngest volcano; the trail provides a physical edge-of-the-world feeling as you look down into the deep, grassy crater and out toward the Southern Ocean.  
(Consider a pit stop, if required, with public toilets available at the base of Mount Schank).

**Little Blue Lake:** Discover a unique natural sinkhole nestled in the middle of a paddock; this local favourite offers a deep-water swimming experience in crystal-clear artesian water framed by dramatic limestone cliffs. Marvel from dry land, or take a cold plunge.

**Bellum Hotel:** Finish your adventure with a hearty meal at this historic pub at the foot of the volcano; known for its warm hospitality and classic "pub grub," it's the perfect place to toast to the day's discoveries.

**Return to accommodation:** Enjoy the drive back to your accommodation along the scenic backroads; if you are staying in Mount Gambier it's an easy 15-minute cruise to town watching the landscape shift from volcanic cones back to the city's historic limestone architecture.



SCENIC TOUR  
GOOGLE MAP

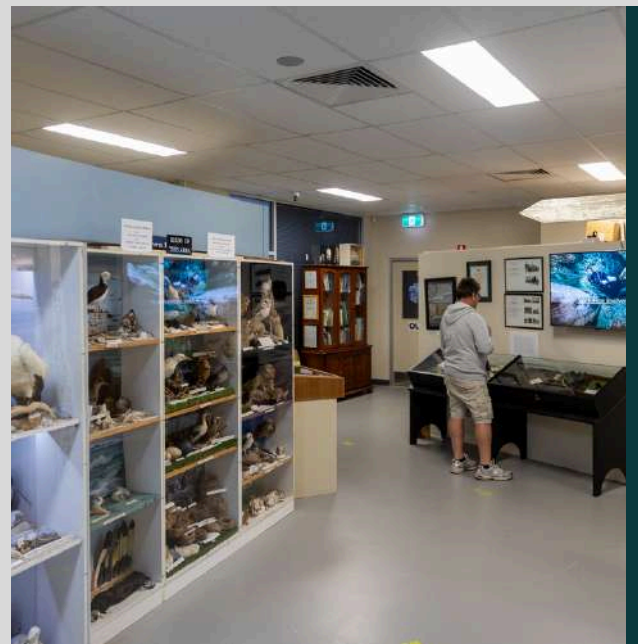
# EXPERIENCE PORT MACDONNELL



1. **The Woolwash**
2. **The Waterfront**
3. **Port MacDonnell Community Complex**
4. **Port MacDonnell Skate Park**
5. **Cape Northumberland**
6. **Surfers Way Beach Carpark**
7. **Germein Reserve**
8. **Return to Mount Gambier**

Explore South Australia's southernmost coastline on this diverse maritime journey.

Blending wild natural scenery with rich heritage, you'll discover the history of the Shipwreck Coast, rugged cliff-top views, and a vibrant waterfront. With peaceful wetland walks and panoramic surf lookouts, it is the ultimate coastal escape. Capture a selfie with the bronzed fisherman and the southernmost point of South Australia.



# EXPERIENCE PORT MACDONNELL

**The Woolwash:** Start your coastal journey at this historic site, where freshwater springs meet the sea; it's a peaceful spot for a beach walk and offers a glimpse into the town's early wool-processing industry.

**The Waterfront:** Explore the heart of the township, featuring the iconic Jetty for a stroll over the water, a modern playground for the kids, and the historic Customs House, a grand reminder of the town's busy shipping past.

**Port MacDonnell Community Complex:** Visit this visitor information hub to explore visitor information, find souvenirs, browse the Art Gallery or dive into local history at the Maritime Museum, which houses artifacts from the Shipwreck Coast and a scale model of the Admella.

**Port MacDonnell Skate Park:** An energetic stop for families, this precinct boasts a high-quality skate park, a flowing pump track, basketball hoops, and a playground to keep young families energised.

**Cape Northumberland:** Stand at the southernmost point of South Australia; this rugged headland offers dramatic cliff views, the ruins of an old lighthouse, and the unique "Petriified Forest" rock formations.

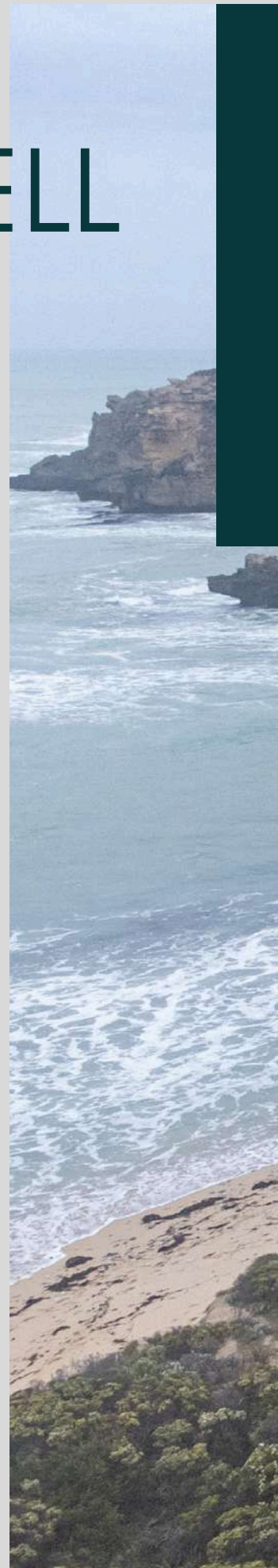
**Surfers Way Beach Carpark:** Pull over at this premier vantage point to watch local surfers tackle the Southern Ocean swells or simply enjoy the panoramic views of the crashing surf and limestone coastline.

**Germein Reserve:** Immerse yourself in local ecology at this hidden nature gem, featuring walking trails through native wetlands and scrubland that provide a sanctuary for local birdlife.

**Return to accommodation:** Conclude your seaside adventure with a scenic drive through the rolling pastures of the Southern Limestone Coast back to your accommodation. (If staying in Mount Gambier it will take a little over 20-minutes).



**PORT MacDONNELL**  
**GOOGLE MAP**



# EXPERIENCE PORT MACDONNELL

## FOOD + DRINK

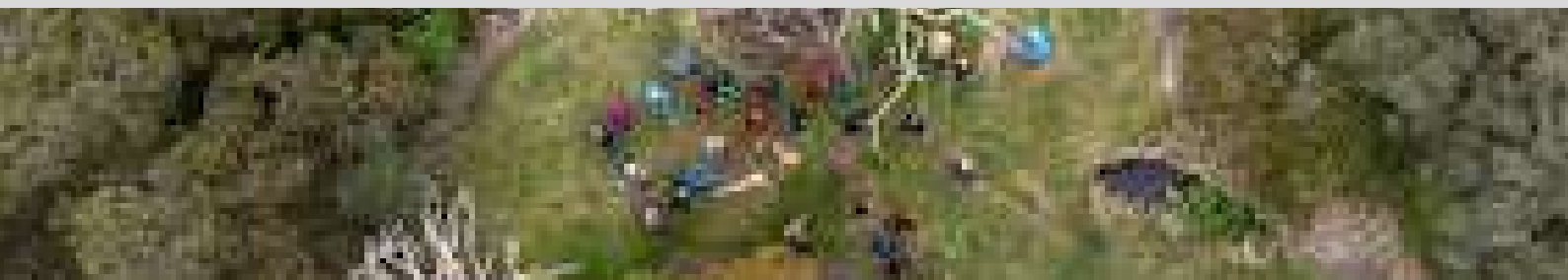
Whether you want a casual bite on the jetty or a sit-down meal, The Bay has you covered:

**Dining, Pizza & Coffee:** Kickstart your morning at **Tide Espresso Bar** with expert specialty coffee, a light lunch or indulgent house-made treats. For a seaside lunch or dinner, head to **Bay Pizzeria** for scrumptious gourmet pizzas in a relaxed sit-down setting, or enjoy a vibrant menu options with front-row seats to the Southern Ocean at **Salt Cafe & Bar**.

**Seafood Specialties:** Pick up the region's famous Southern Rock Lobster or fresh local catches directly from the experts at **Five Star Seafoods**.

**Classic Takeaway:** Grab traditional fish and chips to eat by the water from **Breakwater Fish & Chips, Parade Fish Shop**, or visit the **Port MacDonnell General Store**.

**The Local Pub:** Visit the **Victoria Hotel** for a family-friendly meal and a cold drink from the Shipwreck Bistro in the classic coastal hotel setting.



## GUIDED TOURS + TRAILS

**Guided Adventures:** Book an immersive experience with **Bush Adventures, Walk the Limestone Coast**, or hit the deep sea with **Extreme Marine** and **Port MacDonnell Fishing Charters**.

**Self-Guided History:** Use the local brochures to follow the **Port MacDonnell Historic Trail, the Germein Reserve Walking Trail**, or the coastal **Admella Discovery Trail**.

Visitor information available from Port MacDonnell Community Complex.



**PORT MacDONNELL**  
**GOOGLE MAP**



# FOOD + DRINK DIRECTORY

## **MOORAK, OB FLAT, MOUNT SCHANK, YAHL**

**Scroll Queen, Moorak** | 0421 820 024 | [www.scrollqueen.com.au](http://www.scrollqueen.com.au)

**Good Intentions Wine Co, Moorak** | 0417 827 986 | [www.goodintentionswine.co](http://www.goodintentionswine.co)

**Badenoch's Deli** | [Click here to visit Facebook Page](#)

**The Apple Farm, OB Flat** | 0402 181 655 | [www.theapplefarm.com.au](http://www.theapplefarm.com.au)

**The Barn Steakhouse, OB Flat** | 08 8726 9999 | [www.barn.com.au](http://www.barn.com.au)

**Bellum Hotel, Mount Schank** | 08 8738 5269 | [Click here to visit Facebook Page](#)

**Little Rippa Brewing Company, Yahl** | 0412 717 764 | [www.littlerippabrewingco.com.au](http://www.littlerippabrewingco.com.au)

**Caroline Hills Winery, Yahl** | 0408 258 854 | [www.carolinehills.com.au](http://www.carolinehills.com.au)

## **PORT MacDONNELL**

**Bay Pizzeria** | 08 8738 2233 | [Click here to visit Facebook page](#)

**Breakwater Fish & Chips** | 08 8738 2389 | [Click here to visit Facebook page](#)

**Five Star Seafood** | Phone 08 8738 2203 | <https://fivestarseafoods.com.au>

**Parade Fish Shop** | 08 8738 2239 | [Click here to visit Facebook page](#)

**Port MacDonnell General Store** | 08 8738 2117 | \*Takeaway only

**Salt Cafe & Bar** | (08) 8738 2943 | [Click here to visit Facebook page](#)

**Tide Espresso Bar** | 0455 492 967 | <https://tideespresso.com.au>

**Victoria Hotel** | Phone 08 8738 2213 | [www.ptmacpub.com.au](http://www.ptmacpub.com.au)

## **FURTHER AFIELD**

**Pines Hotel** | 08 8739 6287 | [Click here to visit Facebook page](#)

**The Rocks Tavern** | 08 8738 0202 | [Click here to visit Facebook page](#)



# TOURS DIRECTORY

## BOOKABLE GUIDED TOURS

**Bush Adventures** | 0407 508 528 | [www.bushadventures.com.au](http://www.bushadventures.com.au)

**Coonawarra Experiences** | 0404 092 611 | [www.coonawarraexperiences.com.au](http://www.coonawarraexperiences.com.au)

**Extreme Marine Charters** | 0438 043 700 | [www.extrememarine.net.au](http://www.extrememarine.net.au)

**Kilsby Sinkhole** | 0408 826 355 | [www.kilsbysinkhole.com](http://www.kilsbysinkhole.com)

**Port MacDonnell Fishing Charters** | 0428 382 483 | Visit Facebook page

**Port MacDonnell Maritime Museum** | 08 8738 3000 |

[www.dcgrant.sa.gov.au/community/pmcc/museum](http://www.dcgrant.sa.gov.au/community/pmcc/museum)

**Walk the Limestone Coast** | 0408 086 792 | [www.walkthelimestonecoast.com.au](http://www.walkthelimestonecoast.com.au)

*To avoid disappointment please book ahead.*

## SELF DRIVE TOURS

**Germein Reserve** | Download [Walking Trail Brochure](#)

**Port MacDonnell History** | [Download Historic Trail Brochure](#)

**The Admella Discovery Trail** | Download [Admella Discovery Trail Brochure](#)

## VISITOR INFORMATION OUTLET

**Port MacDonnell Community Complex** | 5/7 Charles Street, Port MacDonnell SA 5291

Opening Times: Monday - Friday 9am-5pm | Weekends 11am - 3pm

Phone: 08 8738 3000 | Facebook @portmacdonnellcommunitycomplex

[www.dcgrant.sa.gov.au/community/pmcc](http://www.dcgrant.sa.gov.au/community/pmcc)



# Explore

## THE SOUTHERN LIMESTONE COAST

A GUIDE FOR FAMILIES AND VISITORS TO  
EXPERIENCE THE SOUTHERN LIMESTONE COAST



MOUNT GAMBIER  
CHAMBER OF  
COMMERCE

